

# Build happier, more productive teams

Ensure your learning center has all the scheduling tools you need.

Mathnasium organizations are finding success with a **time tracking and scheduling solution** from When I Work. Get your Mathnasium location up and running with same-day implementation and free onboarding support.

You'll be able to **connect instantly with your team**, easily see shifts that need to be covered, and **allow employees to use their mobile devices to clock in and out**—no matter where they work.

Join the 130+ locations that rely on When I Work for employee scheduling, time clock, and communication!

Email [franchise@wheniwork.com](mailto:franchise@wheniwork.com)

# Manage your shift-based workplace with features you and your employees will love



## Flexible self scheduling

Give your employees a voice in scheduling to reduce no-shows and increase accountability.



## Labor sharing

Increase your shift coverage by sharing eligible and available employees across all of your locations.



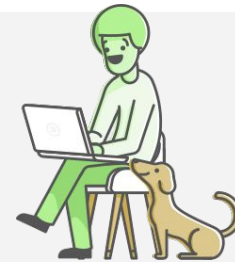
## Contactless mobile time clock

Keep your employees safe and save money—let them use their own devices to clock in and out.



## Secure, anytime communication

Increase collaboration and keep your employees informed of changes through team messaging.



## Onboarding time

2

days is usually all it takes to get your business up and running.

## Onboarding fees

\$0

is the cost to set up your account and train your team.

*We chose When I Work because it offered the flexibility to schedule our seven locations separately. Onboarding new employees to When I Work takes only 5 minutes and staff also install the mobile apps and set up shift reminders to reduce absenteeism!*

**James Temple**

Co-Owner of Mathnasium of Richmond, VA

## Award-winning scheduling and time tracking software



**MATHNASIUM**  
The Math Learning Center

**Mathnasium locations are eligible to receive a corporate discount of 20% off all 2024 pricing plans.**

Email [franchise@wheniwork.com](mailto:franchise@wheniwork.com) for details. Must purchase directly through When I Work and not involve any other channel - payroll rep/marketplace, reseller, etc. Not valid on legacy plans. Check with your Partner Success Manager to see if your plan is eligible.

 **When I Work**<sup>®</sup>